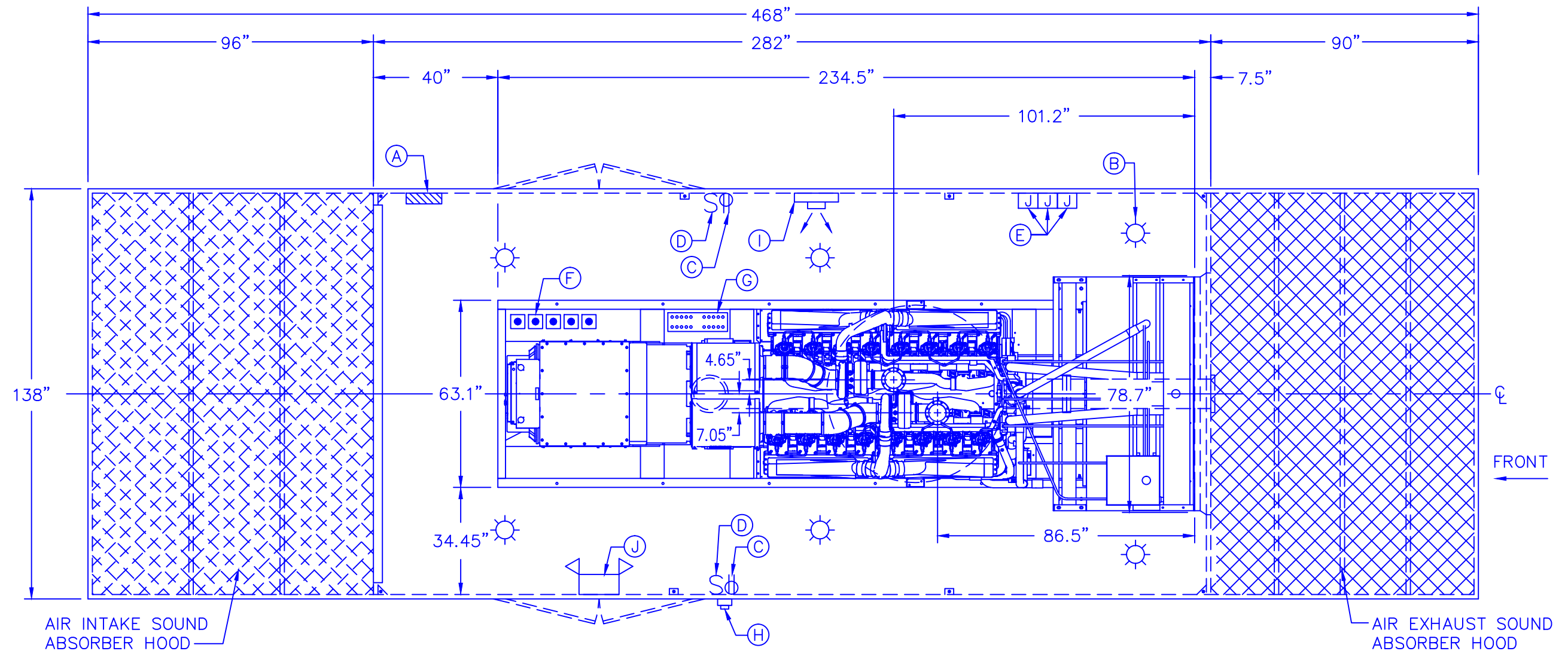


ENCLOSURE TO REDUCE IN FREE FIELD GENERATOR NOISE TO 85 dB/A AT 10 FEET FROM ENCLOSURE

WORK # 68411009



TOP VIEW

KEY NOTE SCHEDULE

ALL ELECTRICAL PARTS WIRED IN RIGID CONDUIT

- A - (1) PANELBOARD 120/208V 3P
- B - (6) INCANDESCENT LIGHTS
- C - (2) DUPLEX RECEPTACLES
- D - (2) LIGHT SWITCHES
- E - (3) JUNCTION BOXES FOR BATTERY CHARGER AND JACKET WATER HEATERS
- F - (5) CONNECTIONS FOR HIGH/LOW/LEAK ALARM
- G - (1) CONNECTION FOR CUSTOMER BATTERIES
- H - EMERGENCY BREAKGLASS (EXTERNAL)
- I - (1) 5 KW SPACE HEATER WITH THERMOSTAT
- J - EMERGENCY LIGHT WITH TWO HEADS


REVISED			
DATE	INITIAL	DATE	INITIAL

© 2004, ACOUSTICAL SHEETMETAL, INC. ALL RIGHTS RESERVED

NOTE: DRAWINGS ARE THE PROPERTY OF ACOUSTICAL SHEETMETAL INC. AND MAY NOT BE REPRODUCED WITHOUT PERMISSION.

Project: (MEHTA) PROJECT SONY
 WEATHERPROOF SOUND ATTENUATED DROP OVER TYPE ENCLOSURE WITH BASE AND BUILT IN UL-142 LISTED 330 GALLON DAY TANK WITH A 200% RUPTURE TANK, FOR A 1,500KW DQGAB CUMMINS DIESEL GENERATOR SET.
 Scale: 5/16"=1'-0" Sheet 1 of 5 Date: 10-21-09

CUSTOMER APPROVAL
 CUMMINS POWER SYSTEMS, LLC., APPROVES THE DESIGN AS SHOWN OR INDICATED AND RELEASES THESE DRAWINGS FOR FABRICATION.
 SIGNATURE _____ DATE _____

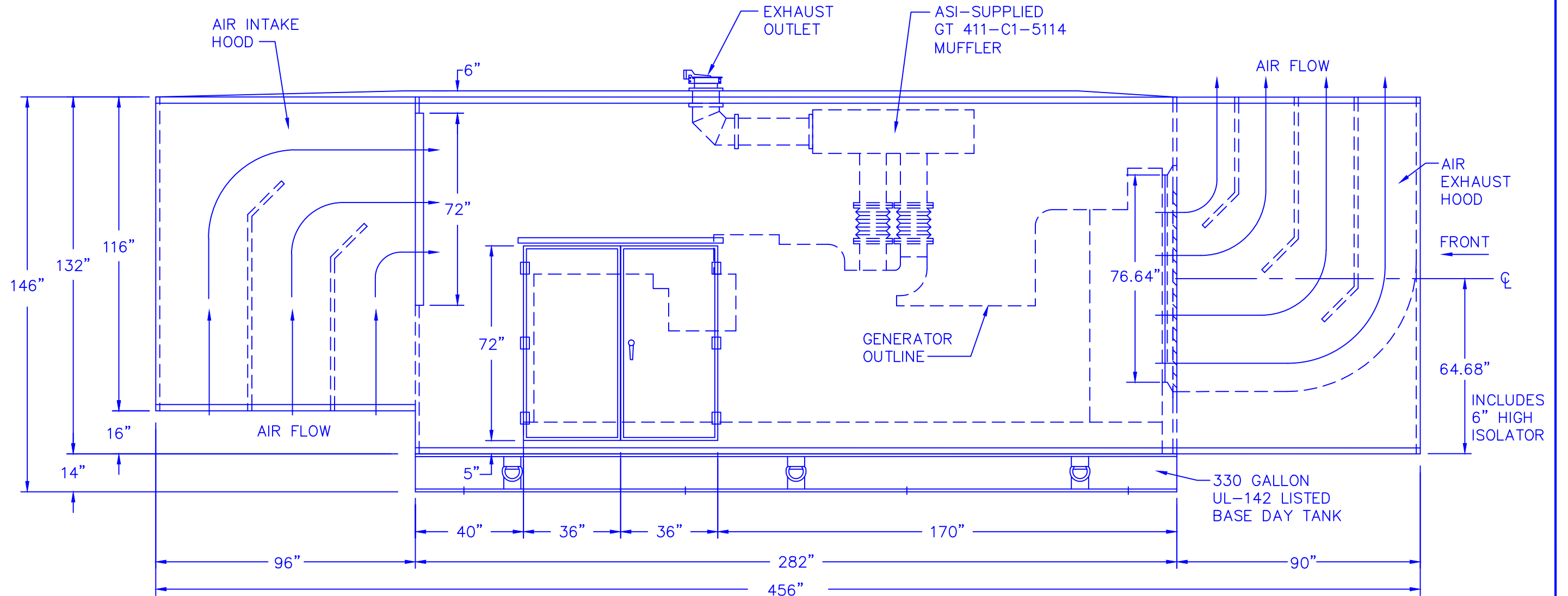


Acoustical Sheetmetal Incorporated

2600 PRODUCTION ROAD
 VA BEACH, VA 23454
 PHONE: (757) 456-9720
 FAX: (757) 557-0245

ENCLOSURE TO REDUCE IN FREE FIELD GENERATOR NOISE TO 85 dB/A AT 10 FEET FROM ENCLOSURE

WORK # 68411009



LEFT SIDE VIEW

NOTE: RIGHT SIDE VIEW SIMILAR BUT OPPOSITE HAND

REVISED

DATE	INITIAL	DATE	INITIAL

© 2004, ACOUSTICAL SHEETMETAL, INC. ALL RIGHTS RESERVED

NOTE: DRAWINGS ARE THE PROPERTY OF ACOUSTICAL SHEETMETAL INC. AND MAY NOT BE REPRODUCED WITHOUT PERMISSION.

Project: (MEHTA) PROJECT SONY
 WEATHERPROOF SOUND ATTENUATED DROP OVER TYPE ENCLOSURE WITH BASE AND BUILT IN UL-142 LISTED 330 GALLON DAY TANK WITH A 200% RUPTURE TANK, FOR A 1,500KW DQGAB CUMMINS DIESEL GENERATOR SET.

Scale: 5/16"=1'-0" Sheet 2 of 5 Date: 10-21-09

CUSTOMER APPROVAL

CUMMINS POWER SYSTEMS, LLC., APPROVES THE DESIGN AS SHOWN OR INDICATED AND RELEASES THESE DRAWINGS FOR FABRICATION.

SIGNATURE

DATE



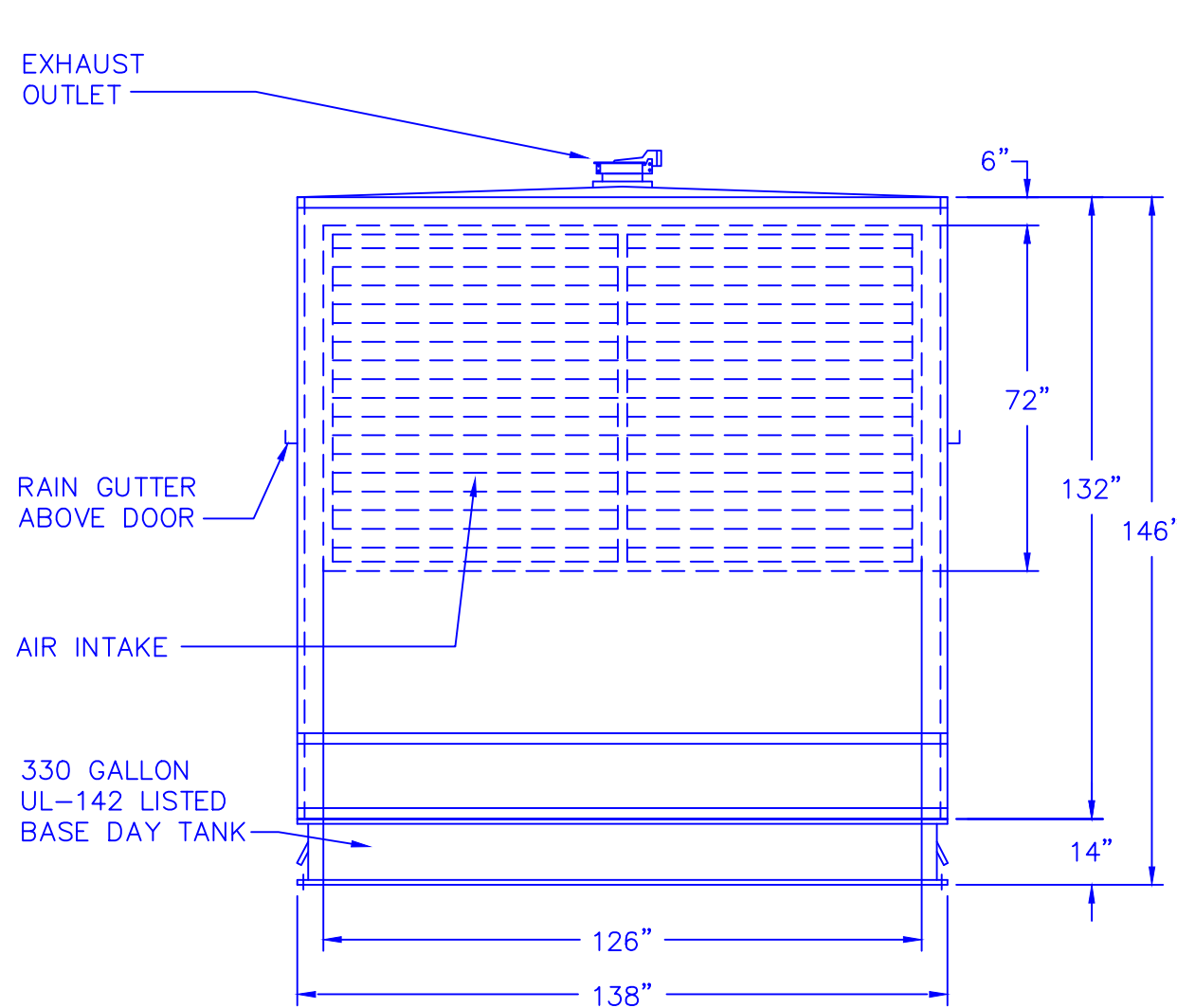
Acoustical Sheetmetal Incorporated

2600 PRODUCTION ROAD
 VA BEACH, VA 23454
 PHONE: (757) 456-9720
 FAX: (757) 557-0245

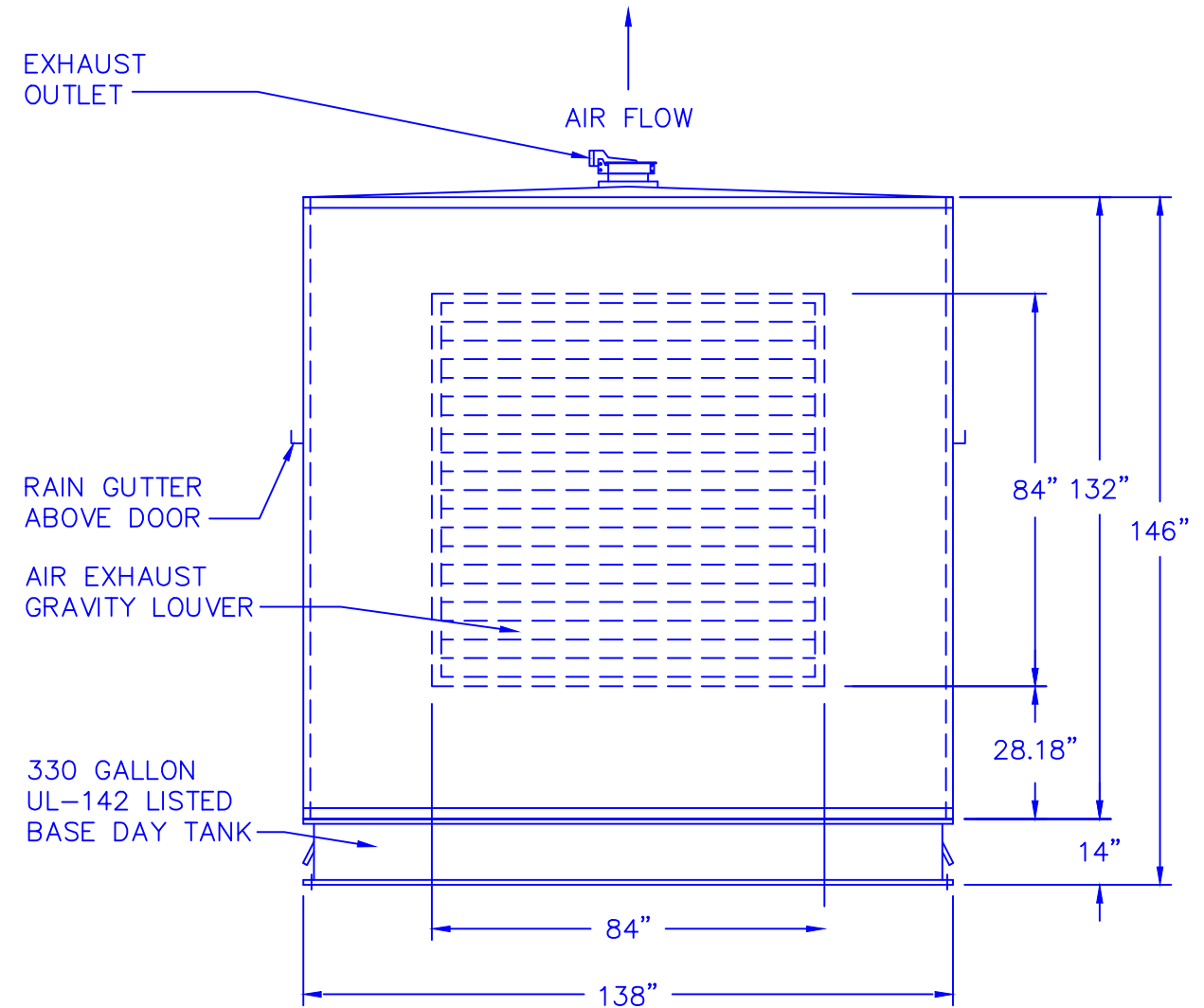
VIRGINIA BEACH, VA

ENCLOSURE TO REDUCE IN FREE FIELD GENERATOR NOISE TO 85 dB/A AT 10 FEET FROM ENCLOSURE

WORK # 68411009



REAR VIEW



FRONT VIEW

REVISED

DATE	INITIAL	DATE	INITIAL

© 2004, ACOUSTICAL SHEETMETAL, INC. ALL RIGHTS RESERVED

NOTE: DRAWINGS ARE THE PROPERTY OF ACOUSTICAL SHEETMETAL INC. AND MAY NOT BE REPRODUCED WITHOUT PERMISSION.

Project: (MEHTA) PROJECT SONY
 WEATHERPROOF SOUND ATTENUATED DROP OVER TYPE ENCLOSURE WITH BASE AND BUILT IN UL-142 LISTED 330 GALLON DAY TANK WITH A 200% RUPTURE TANK, FOR A 1,500KW DQGAB CUMMINS DIESEL GENERATOR SET.

Scale: 5/16"=1'-0" Sheet 3 of 5 Date: 10-21-09

CUSTOMER APPROVAL

CUMMINS POWER SYSTEMS, LLC., APPROVES THE DESIGN AS SHOWN OR INDICATED AND RELEASES THESE DRAWINGS FOR FABRICATION.

SIGNATURE

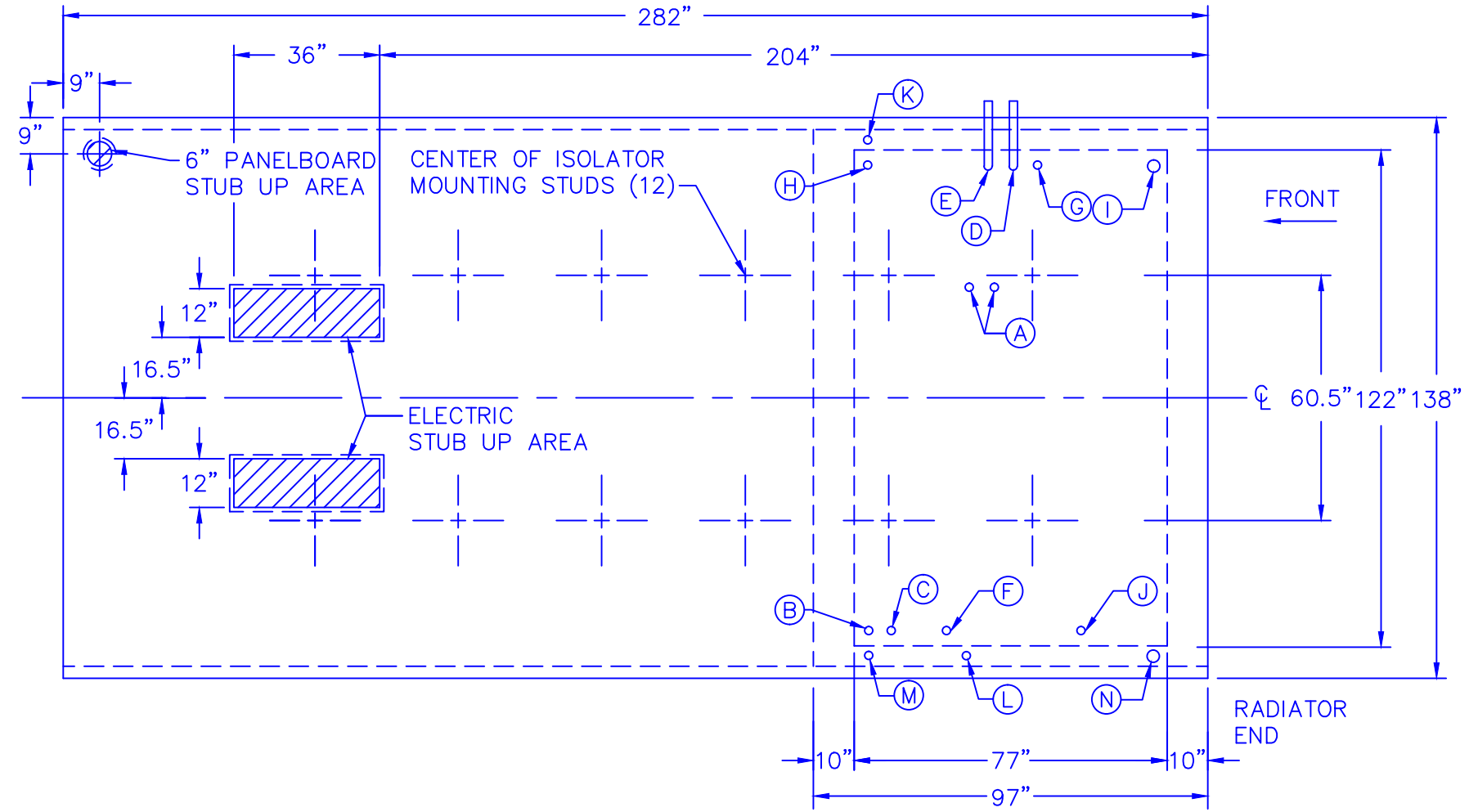
DATE



Acoustical
 Sheetmetal
 Incorporated

2600 PRODUCTION ROAD
 VA BEACH, VA 23454
 PHONE: (757) 456-9720
 FAX: (757) 557-0245

VIRGINIA BEACH, VA



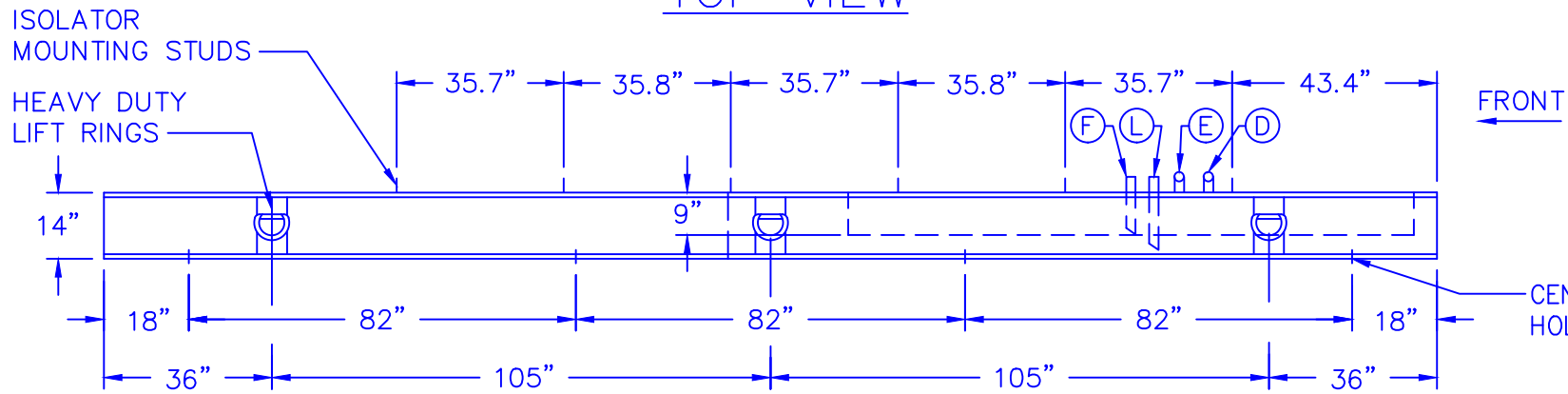
TOP VIEW

COUPLING LEGEND

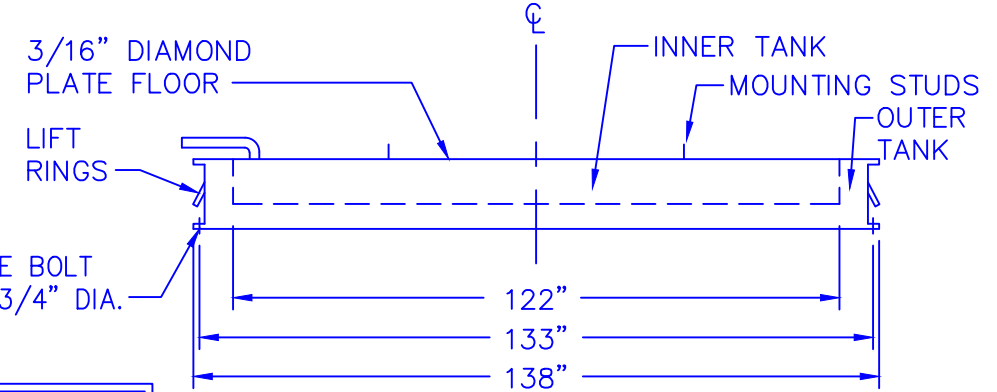
- 330 GALLON INNER TANK:
- (A) - 1" COUPLINGS FOR FUEL PICKUP AND RETURN LINES
 - (B) - 2" VENT TO OUTSIDE FROM ENCLOSURE
 - (C) - 1 1/2" MECHANICAL FUEL LEVEL GAUGE
 - (D) - 1" FUEL FILL COUPLING FOR FUEL PUMP
 - (E) - 1" FUEL RETURN COUPLING FOR FUEL PUMP
 - (F) - 1" DRAIN COUPLING WITH PLUG
 - (G) - 2" LOW/HIGH FUEL LEVEL SWITCH FOR FUEL PUMP ON/OFF
 - (H) - 1 1/4" LOW/HIGH FUEL ALARM SWITCH
 - (I) - EMERGENCY VENT
 - (J) - 2" SPARE COUPLINGS
- 200% OUTER RUPTURE TANK:
- (K) - 1 1/4" LEAK ALARM SWITCH
 - (L) - 1" DRAIN COUPLING WITH PLUG
 - (M) - 2" VENT TO OUTSIDE FROM ENCLOSURE
 - (N) - EMERGENCY VENT

GENERAL NOTES

TANK TO BE CONSTRUCTED TO MEET UL LISTED NYC 142 REQUIREMENTS FOR INTEGRITY, PRESSURE, MAINTENANCE AND QUALITY CRAFTSMANSHIP.
 MATERIAL: 1/4" & 5/16" STEEL PLATE AND CHANNEL
 STRENGTH: MEETING ASTM A-36
 WELDERS: CERTIFIED UNDER ASME SECTION IX
 FINISH: PRIMER AND TWO COATS ACRYLIC ENAMEL



LEFT SIDE VIEW



FRONT VIEW

NOTE: ASI RECOMMENDS DRILLING ANCHOR BOLTS HOLES AND PLACEMENT OF ANCHOR BOLTS AFTER UNIT IS LOCATED ON CONCRETE PAD

NOTE: RIGHT SIDE SIMILAR BUT OPPOSITE HAND

REVISED			
DATE	INITIAL	DATE	INITIAL

© 2004, ACOUSTICAL SHEETMETAL, INC. ALL RIGHTS RESERVED

NOTE: DRAWINGS ARE THE PROPERTY OF ACOUSTICAL SHEETMETAL INC. AND MAY NOT BE REPRODUCED WITHOUT PERMISSION.

Project: (MEHTA) PROJECT SONY
 WEATHERPROOF SOUND ATTENUATED DROP OVER TYPE ENCLOSURE WITH BASE AND BUILT IN UL-142 LISTED 330 GALLON DAY TANK WITH A 200% RUPTURE TANK, FOR A 1,500KW DQGAB CUMMINS DIESEL GENERATOR SET.
 Scale: 5/16"=1'-0" Sheet 4 of 5 Date: 10-21-09

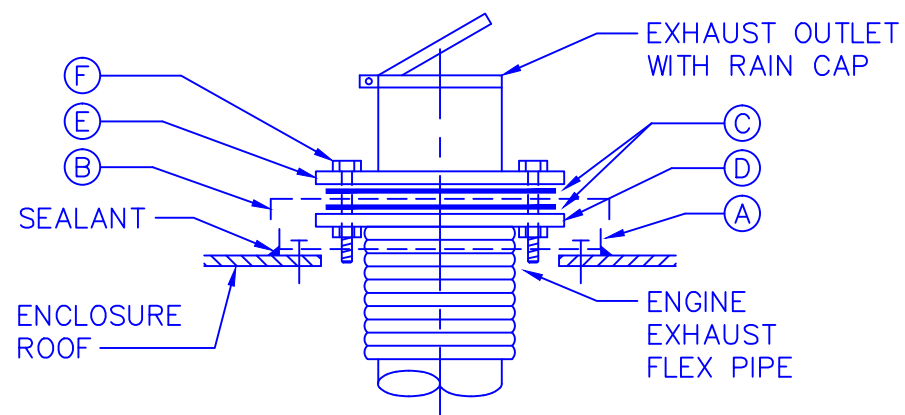
CUSTOMER APPROVAL
 CUMMINS POWER SYSTEMS, LLC., APPROVES THE DESIGN AS SHOWN OR INDICATED AND RELEASES THESE DRAWINGS FOR FABRICATION.

SIGNATURE _____ DATE _____

Acoustical Sheetmetal Incorporated

2600 PRODUCTION ROAD
 VA BEACH, VA 23454
 PHONE: (757) 456-9720
 FAX: (757) 557-0245

VIRGINIA BEACH, VA



RAIN COLLAR/SHIELD INSTALLATION

STANDARD EXHAUST SYSTEM KEYNOTES

- (A) - RAIN COLLAR, RIVETED/SCREWED TO ROOF WITH SILICONE SEALER AROUND PERIPHERY
- (B) - RAIN SHIELD
- (C) - GASKETS (2)
- (D) - EXHAUST FLEX FLANGE
- (E) - MUFFLER INLET FLANGE WITH RAIN CAP
- (F) - BOLTS/NUTS/WASHERS/LOCK WASHERS

DESCRIPTION

<p>DESCRIPTION: ONE (1) WEATHER PROTECTIVE, SOUND ATTENUATED, DROP-OVER TYPE ENCLOSURE WITH A BASE AND BUILT IN UL-142 LISTED 330 GALLON DAY TANK WITH A 200% RUPTURE TANK, FOR A 1,500KW DQGAB CUMMINS DIESEL GENERATOR SET. ENCLOSURE TO REDUCE GENERATOR NOISE IN FREE FIELD TO 85 DB/A AT 10 FEET FROM ENCLOSURE IF GENERATOR NOISE DOES NOT EXCEED 101 DB/A AT 23 FEET FROM GENERATOR. ENCLOSURE AND TANK TO MEET NEW YORK CITY CODE AND WITHSTAND 100 MPH WIND LOAD.</p> <p>ENCLOSURE DIMENSIONS: 282" LONG x 138" WIDE x 132" HIGH</p> <p>DIMENSIONS OVERALL: 468" LONG x 138" WIDE x 146" HIGH</p> <p>EXTERIOR: FOURTEEN (14) GAUGE (.063) WHITE OR BRONZE BAKED ENAMEL ALUMINUM, FOURTEEN (14) GAUGE (.063) MILL-FINISHED ALUMINUM, OR TWENTY-FOUR (24) GAUGE COLORKLAD GALVANIZED STEEL PANELS IN SIX STANDARD COLORS.</p> <p>INTERIOR: THREE INCH BY TWO INCH (3" X 2") STEEL TUBE FRAME PRIMED AND PAINTED, FILLED 100% WITH THREE INCH (3") THICK SOUND ABSORBING INSULATION WITH A FLAME SPREAD OF 10, FUEL CONTRIBUTING 0 AND SMOKE DEVELOPED 0, COVERED WITH 18 GAUGE (.040) MILL FINISHED PERFORATED ALUMINUM</p> <p>ACCESS: TWO (2) 72" X 72" SOLID DOUBLE DOOR WITH PADLOCKING HANDLES, THREE-POINT LATCHES, PANIC RELEASE FROM INSIDE ENCLOSURE, STAINLESS STEEL BUTT HINGES, STAINLESS STEEL DOOR HOLDERS, AND RAIN GUTTERS ABOVE DOORS.</p>	<p>AIR INTAKE: EXTERNAL SOUND ABSORBING HOOD WITH INTERNAL SOUND ABSORBING BAFFLE SYSTEM WITH BIRDSCREEN FOR 65,045 CFM COMBUSTION AND COOLING AIR WITH A VELOCITY OF 950 FEET PER MINUTE</p> <p>AIR EXHAUST: EXTERNAL SOUND ABSORBING VERTICAL PLENUM WITH INTERNAL SOUND ABSORBING BAFFLE SYSTEM, BIRDSCREEN, AND GRAVITY LOUVERS FOR RADIATOR DISCHARGE.</p> <p>MISCELLANEOUS: MUFFLER BRACKETS, MUFFLER STRAPS, RAIN COLLAR AND RAIN SHIELD FOR INTERNAL INSTALLATION OF ONE (1) ASI-SUPPLIED MUFFLER. RADIATOR CAP ACCESS. ELECTRIC STUB-UP AREA IN BASE DAY TANK</p> <p>BASE DESCRIPTION: 282" LONG x 138" WIDE x 14" HIGH. BASE BUILT FROM 5/16" STEEL PLATE (INNER TANK), 1/4" STEEL PLATE (RUPTURE TANK), 14" C-CHANNEL, AND 7 GAUGE (3/16") STEEL DIAMOND PLATE FLOOR; WITH ELECTRICAL STUB UP AREAS, 6 POINT LIFTING RINGS, AND PRIMED AND PAINTED WITH BLACK ENAMEL. ALL OPENINGS THROUGH TOP OF TANK. THREADED GROUNDING STUD WELDED TO SIDE OF TANK. ALL FUEL AND VENT PIPING TO BE DONE WITH SEAMLESS PIPE.</p> <p>UL-LISTED BASE DAY TANK AND RUPTURE TANK DESCRIPTION:</p> <p>330 GALLON INNER TANK: 77" LONG x 122" WIDE x 9" HIGH OUTER RUPTURE TANK: 97" LONG x 132" WIDE x 14" HIGH</p> <p>WEIGHT: APPROXIMATELY 26,000 LBS. ASI EQUIPMENT ONLY</p>
---	---

REVISED

DATE	INITIAL	DATE	INITIAL

© 2004, ACOUSTICAL SHEETMETAL, INC. ALL RIGHTS RESERVED

NOTE: DRAWINGS ARE THE PROPERTY OF ACOUSTICAL SHEETMETAL INC. AND MAY NOT BE REPRODUCED WITHOUT PERMISSION.

Project: (MEHTA) PROJECT SONY
 WEATHERPROOF SOUND ATTENUATED DROP OVER TYPE ENCLOSURE WITH BASE AND BUILT IN UL-142 LISTED 330 GALLON DAY TANK WITH A 200% RUPTURE TANK, FOR A 1,500KW DQGAB CUMMINS DIESEL GENERATOR SET.

Scale: NTS Sheet 5 of 5 Date: 10-21-09

CUSTOMER APPROVAL
 CUMMINS POWER SYSTEMS, LLC., APPROVES THE DESIGN AS SHOWN OR INDICATED AND RELEASES THESE DRAWINGS FOR FABRICATION.

SIGNATURE _____ DATE _____



Acoustical Sheetmetal Incorporated
 2600 PRODUCTION ROAD
 VA BEACH, VA 23454
 PHONE: (757) 456-9720
 FAX: (757) 557-0245

VIRGINIA BEACH, VA